



Nissan Intelligent Mobility moves you one step ahead. In cars that feel like an extension of you, helping you see more and sense more, reacting with you, and sometimes even for you. Nissan Intelligent Mobility is about a better future – moving through life with greater confidence, excitement and connection to the world around you.



FRONTIER®

2022



¹Vehicle shown with third-party accessories. ²Available feature. ³Remote Engine Start System to be used only in accordance with any laws or rules in effect in your vehicle's location. ⁴Intelligent Around View® Monitor cannot eliminate blind spots and may not detect every object. Driver should always turn and check surroundings before driving. See Owner's Manual for safety information. ⁵Maximum towing capacity when properly equipped. Maximum towing of up to: 6,720 lbs. for Frontier King Cab® 4x2; 6,510 lbs. for Frontier King Cab® 4x4; 6,570 for Frontier Crew Cab 4x2; 6,370 for Frontier Crew Cab 4x4; 6,460 for Frontier Crew Cab Long Bed 4x2; 6,260 for Frontier Crew Cab Long Bed 4x4. Towing capacity varies by configuration. See Nissan Towing Guide and Owner's Manual for additional information. ⁶Maximum payload capacity when properly equipped. Maximum payload of up to: 1,610 lbs. for Frontier King Cab® 4x2; 1,440 lbs. for Frontier King Cab® 4x4; 1,480 lbs. for Frontier Crew Cab 4x2; 1,290 lbs. for Crew Cab 4x4; 1,360 lbs. for Frontier Crew Cab Long Bed 4x2; 1,160 for Frontier Crew Cab Long Bed 4x4. Payload capacity varies by configuration. See Nissan Towing Guide and Owner's Manual for additional information. ⁷Availability of features vary by vehicle model year, model, trim level, packaging, and options. Please see Owner's Manual for important feature information. ⁸Nissan Safety Shield technologies can't prevent all collisions or warn in all situations. See Owner's Manual for important safety information. ⁹Automatic Emergency Braking with Pedestrian Detection cannot prevent all collisions and may not provide warning or braking in all conditions. Driver should monitor traffic conditions and brake as needed to prevent collisions. See Owner's Manual for safety information. ¹⁰Rear Automatic Braking cannot prevent all collisions and may not provide warning or braking in all conditions. Driver should monitor traffic conditions and brake as needed to prevent collisions. See Owner's Manual for safety information. ¹¹Rear Cross Traffic Alert may not detect all vehicles. See Owner's Manual for safety information. ¹²Blind Spot Warning cannot prevent collisions and may not detect every object or warn in all situations. Driver should always turn and look before changing lanes. See Owner's Manual for safety information. ¹³Lane Departure Warning only operates when lane markings are able to be detected. See Owner's Manual for safety information. ¹⁴Intelligent Cruise Control uses limited braking and is not a collision avoidance or warning system. Driver should monitor traffic conditions and brake as needed to prevent collisions. See Owner's Manual for safety information. ¹⁵120-volt power outlet is intended only for use with compatible items. Please check specifications of wattage and amperage of items to be plugged in to determine compatibility. ¹⁶Use feature only when safe and legal. Compatible device and service required. Subject to third party service availability. For more information see [NissanUSA.com/connect/legal](https://www.nissanusa.com/connect/legal). ¹⁷Comparison based on 2022 Frontier PRO-4X vs. latest in-market *Ward's* Small Truck segment. Based on manufacturer's website. Claim current at time of publication. ¹⁸Driving is serious business and requires your full attention. If you have to use the connected device while driving, exercise extreme caution at all times so full attention may be given to vehicle operation. ¹⁹Cargo shown for display purposes only. Cargo and load capacity limited by weight and distribution. Always secure cargo. Heavy loading of the vehicle with cargo, especially on the roof, will affect the handling and stability of the vehicle. ²⁰Extra cost option. ²¹Leather appointments. ²²Intelligent Forward Collision Warning cannot prevent collisions. See Owner's Manual for safety information. ²³RearView Monitor may not detect every object and does not eliminate blind spots or warn of moving objects. See Owner's Manual for safety information. ²⁴Intelligent Driver Alertness cannot provide a warning in every situation. See Owner's Manual for safety information. ²⁵Vehicle Dynamic Control cannot prevent collisions due to abrupt steering, carelessness, or dangerous driving techniques. It should remain on when driving, except when freeing the vehicle from mud or snow. See Owner's Manual for safety information. ²⁶Information displayed is dependent on how vehicle is equipped. Driving is serious business and requires your full attention. If you have to use the feature while driving, exercise extreme caution at all times so full attention may be given to vehicle operation. ²⁷Never program while driving. GPS mapping may not be detailed in all areas or reflect current road status. ²⁸Use Hands Free Text Messaging when parked in a safe location. If you must use while driving, monitor traffic conditions and keep both hands on the steering wheel to prevent collisions. Compatible device required. Message and data rates may apply. ²⁹Tire Pressure Monitoring System is not a substitute for regular tire pressure checks. See Owner's Manual for safety information. ³⁰Traffic Sign Recognition may not detect and read all traffic signs in all conditions. Driver should monitor all traffic signs and obey all traffic laws. See Owner's Manual for details. ³¹Towing capability varies by configuration. See Nissan Towing Guide and Owner's Manual for additional information. Always secure cargo. ³²Genuine Nissan Accessories are covered by Nissan's Limited Warranty on Genuine Nissan Replacement Parts, Genuine NISMO® S-Tune Parts, and Genuine Nissan Accessories for the longer of 12 months/12,000 miles (whichever occurs first) or the remaining period under the 3-year/36,000-mile (whichever occurs first) Nissan New Vehicle Limited Warranty. Terms and conditions apply. See dealer, Warranty Information Booklet, or [parts.NissanUSA.com](https://www.nissanusa.com) for details. ³³Affiliated Yakima® accessories are not warranted by Nissan. Refer to product manufacturer for warranty details. Nissan Limited Warranty does not cover damages or failures to the vehicle caused by improper installation or alterations of any Nissan-approved accessory or component. Contact your dealer/retailer for details. ³⁴King Cab, Crew Cab Long Bed, and Crew Cab 4x2 models only. ³⁵Brake Assist cannot prevent all collisions and may not provide warning or braking in all conditions. Driver should monitor traffic conditions and brake as needed to prevent collisions. See Owner's Manual for safety information. ³⁶Sonar System may not detect every object. Driver should always check surroundings before driving. See Owner's Manual for safety information. ³⁷4x4 only. ³⁸Rear Door Alert System does not detect people or cargo. Always check rear seat before exiting. See Owner's Manual for safety information. ³⁹Air bags are only a supplemental restraint system. Always wear your seat belt. Rear-facing child restraints should not be placed in the front-passenger's seat. All children 12 and under should ride in the rear seat properly secured in child restraints, booster seats, or seat belts according to their size. Air bags will only inflate in certain accidents. See Owner's Manual for safety information. ⁴⁰Interior passenger volume with moonroof is 98.9 cu. ft. ⁴¹2022 EPA Fuel Economy Estimates. 18 City MPG / 24 Highway MPG / 20 Combined MPG for Frontier® 4x2; 17 City MPG / 22 Highway MPG / 19 Combined MPG for Frontier 4x4. Actual mileage may vary with driving conditions. Use for comparison only. ⁴²Roadside Assistance available for a period of 36 months/36,000 miles from the date the vehicle is delivered to the first retail buyer or otherwise put into use, whichever is earlier. Google, Android, Android Auto, Google Assistant and YouTube are trademarks of Google LLC. Google Assistant is not available in certain languages and countries. Amazon, Alexa and all related logos are trademarks of Amazon.com, Inc. or its affiliates. Apple CarPlay®, Apple Music®, Siri® and Siri® Eyes Free are registered trademarks of Apple, Inc. Apple Maps is a trademark of Apple, Inc. Bilstein® is a registered trademark of ThyssenKrupp Bilstein GmbH. Bluetooth® word mark and logos are owned by Bluetooth SIG, Inc., and any use of such marks by Nissan is under license. Bose is a registered trademark of The Bose Corporation. Facebook® is a registered trademark of Facebook, Inc. Fender® is a registered trademark of Fender Musical Instruments Corporation. HomeLink® is a registered trademark of Gentex Corporation. iPhone® is a registered trademark of Apple, Inc. All rights reserved. iPhone® or other external device not included. KICKER® is a registered trademark of Stillwater Designs. Qi® is a registered trademark of IEEE Industry Standards and Technology Organization. The Sirius®, XM®, and SiriusXM® names and all related marks and logos are trademarks of Sirius XM Radio Inc. Twitter® is a registered trademark of Twitter, Inc. This brochure is intended for general descriptive and informational purposes only. It is subject to change and does not constitute an offer, representation or warranty (express or implied) by Nissan North America, Inc. Interested parties should confirm the accuracy of any information in this brochure as it relates to a vehicle directly with Nissan North America, Inc., before relying on it to make a purchase decision. Nissan North America, Inc., reserves the right to make changes, at any time, without prior notice, in prices, colors, materials, equipment, specifications, and models and to discontinue models or equipment. Due to continuous product development and other pre- and post-production factors, actual vehicle, materials and specifications may vary from this brochure. Some vehicles shown with optional equipment. See the actual vehicle for complete accuracy. Availability and delivery times for particular models or equipment may vary. Specifications, options and accessories may differ in Hawaii, U.S. territories and other countries. For additional information on availability, options or accessories, see your Nissan dealer or contact Nissan North America, Inc. At [NissanUSA.com](https://www.nissanusa.com), you'll find virtual product demonstrations, a way to "build your own Nissan," a dealer locator, and more information about key Nissan support services. Or if you'd prefer, call **1-800-NISSAN-3** for answers to specific questions about Frontier® or any other Nissan vehicle. The Nissan names, logos, product names, feature names, and slogans are trademarks owned by or licensed to Nissan Motor Co. Ltd. and/or its North American subsidiaries. Other trademarks and trade names are those of their respective owners. **Always wear your seat belt, and please drive responsibly.** ©2021 Nissan North America, Inc. ²² Frontier.® 2205857-N-8/21-100K-KSL

Find your frontier

Your Frontier® is calling. It's time to go out and find it. Redefine your idea of freedom with capability that expands your realm and inspires new adventures. Pack your duffel bags, prep your gear. This is the all-new Nissan Frontier.





Welcome to the great indoors

The destination is rocky, dusty, and sometimes rough. Getting there doesn't have to be. Start your Frontier® remotely,^{2,3} hop in, and you'll be cradled in a prewarmed or precooled interior that's thoughtfully designed and thoroughly equipped. Defy discomfort with standard Zero Gravity front seats, and conquer the cold with available Dual Zone Automatic Temperature Control and available heated front seats.

- Remote Engine Start System^{2,3}
- Heated Front Seats²
- Heated Steering Wheel²
- Dual Zone Automatic Temperature Control²
- Zero Gravity Front Seats

Nissan Frontier® Crew Cab PRO-4X® shown in Charcoal Cloth with Lava Red Stitching.



Feed your craving for dirt

Between the straight lines and smooth surfaces of society lies all things jagged, dusty, rutted, sandy, muddy, and rocky. Excel in this environment with Frontier® PRO-4X.® It's a Frontier optimized for off-road abuse, so you can go farther into the backcountry with more confidence, and more grins mile after mile.

4WD LO The Frontier PRO-4X is a true 4x4, with three driver selectable modes — 2WD, 4H, and 4LO, so you can thrive in just about any environment you encounter.

Dedicated Off-Road Display Keep track of pitch, roll, and also key off-road functions like 4x4 engagement, and differential lock status for a more confident day on the trail with the PRO-4X.

Off-Road Upgrades With its all-terrain tires, Bilstein® off-road performance shocks, electronic locking rear differential and skid plates, the PRO-4X checks all the boxes of a legit off-road performer.

Intelligent Around View® Monitor Like a virtual spotter, available Intelligent Around View® Monitor⁴ with Off-Road Mode can show more of the trail around you to help you navigate tougher obstacles.





Nissan Frontier® Crew Cab PRO-4X® shown in Deep Blue Pearl with a max payload capacity of up to 1,230 lbs.⁶

Nissan Safety Shield® 360 and Driver Assist Technologies

Frontier® backs you up with some of the most advanced standard and available safety and driver assist features you'll find in a midsize truck, with safety technologies that can help you avoid accidents and give you more peace of mind when you're towing, hauling, and doing truck things.^{7,8}

Standard Automatic Emergency Braking with Pedestrian Detection⁹

Available Rear Automatic Braking¹⁰

Available Rear Cross Traffic Alert¹¹

Available Blind Spot Warning¹²

Available Lane Departure Warning¹³

Available High Beam Assist

Available Intelligent Cruise Control¹⁴

310

Horsepower

281

lb-ft of Torque

1,610

lbs. max Payload⁶

6,720

lbs. max Towing⁵



Dream it. Hitch it. Tow it. Send it.

Frontier[®] does more than tow — it's a truck built to pull your dreams farther off the beaten path. Starting with Tow-Haul mode, which optimizes your drive on the highway for heavier loads.² Turn off the highway and Frontier attacks uneven, hilly terrain with features like hill start assist and hill descent control.² And confidence-inspiring approach, breakover, and departure angles. When it's time to get your trailer of choice up that last sketchy hill, engage 4LO and the electronic locking rear differential for maximum traction.²

Tow-Haul Mode ²	Hill Start Assist	Hill Descent Control ²	Electronic Locking Rear Differential ²
----------------------------	-------------------	-----------------------------------	---



32.3° - Angle of Approach

19.6° - Breakover Angle

23.0° - Angle of Departure (without tow hitch receiver)

Nissan Frontier[®] Crew Cab PRO-4X[®] shown in Boulder Gray Pearl with a max payload capacity of up to 1,230 lbs, and max towing capacity of up to 6,270 lbs.^{5, 6}

Truck bed 2.0

LED Bed Lighting Load up after dark with plenty of lighting to see what you're doing, thanks to Frontier's available LED under-rail bed lighting.

120-V Outlet Frontier's available bed-mounted 120-volt AC power outlet gives you the flexibility of a household power plug for electricity on the go.¹⁵

Dampened
Tailgate

Spray-on
Bedliner²

3 Utili-track®
Channels²



Under-Seat Storage Removable under-seat storage trays stash beneath the rear seats, so there's a space for everything. Plus you can flip up the rear seat cushions for even more storage room.¹⁹

Two Cabs & Two Bed Lengths Configurations, galore. Choose from either the workhorse King Cab® that seats four with a 6-foot bed, or the versatile five-seater Crew Cab with either a 5-foot or 6-foot bed.

**King Cab®
Bed – 6.0'**

Available on S and SV



**Crew Cab
Short Bed – 5.0'**

Available on S, SV, PRO-X™
and PRO-4X®



**Crew Cab
Long Bed – 6.0'**

Available on SV



Roughing it just got a lot less rough

Moonroof Let in more of the outdoors at the push of a button with the available Power Sliding Glass Moonroof, which also includes a tilt feature.

NissanConnect® Services powered by SiriusXM® Maintain a closer relationship with your all-new Frontier using NissanConnect® Services. You can access a variety of features through your vehicle and compatible smartphone, and even use your voice to communicate with your vehicle through Amazon Alexa or Google Assistant.¹⁶

9-inch display The available NissanConnect® 9" color touch-screen display leads its class in size,¹⁷ and invites you to tap, swipe, pinch, and zoom to your heart's content with a visual clarity and responsiveness you've never seen before in a Frontier.¹⁶

Wireless charging Ditch the cord and place your Qi®-enabled smartphone on the available wireless charging pad located behind the shifter while the all-new Frontier does the rest.¹⁸

Front and
Rear USB^{2, 18}

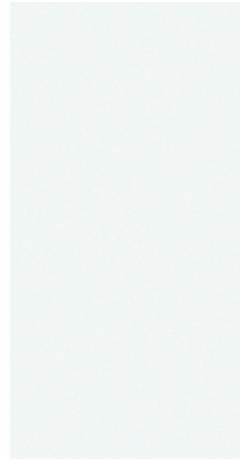
NissanConnect® with
Wi-Fi Hotspot^{2, 16}

Fender® Premium
Audio System²

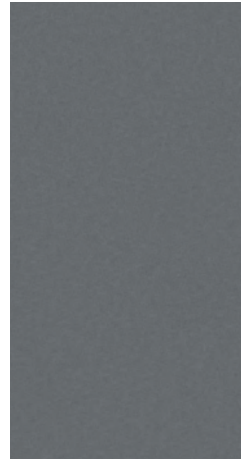


Fender
PREMIUM AUDIO

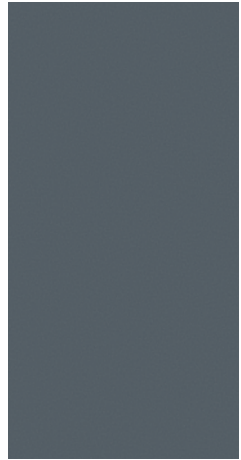
CHOOSE YOUR COLOR



Glacier White



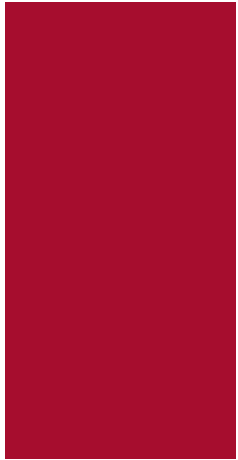
Gun Metallic



Boulder Gray Pearl



Baja Storm Pearl²⁰



Red Alert

	S	SV	PRO-X	PRO-4X
Charcoal Cloth	■			
Premium Charcoal Cloth		■		
Sandstone Cloth		CC		
Charcoal Cloth with Lava Red Stitching			■	■
Charcoal Leather ²¹		P	P	P



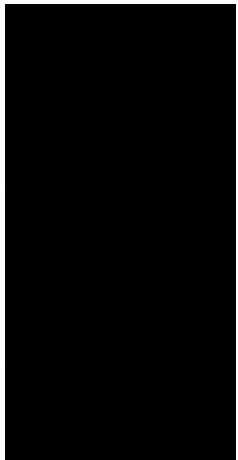
Cardinal Red TriCoat²⁰



Tactical Green Metallic²⁰



Deep Blue Pearl



Super Black

- Standard
- P Part of Premium Package
- CC Crew Cab only

Nissan has taken care to ensure that the color swatches presented here are the closest possible representations of actual vehicle colors. Swatches may vary slightly due to the printing process and whether viewed in daylight, fluorescent or incandescent light. Please see the actual colors at your dealer.

	S	SV	PRO-X	PRO-4X
Charcoal Cloth				
Premium Charcoal Cloth		■		
Sandstone Cloth		CC		
Charcoal Cloth with Lava Red Stitching			■	■
Charcoal Leather ²¹		P	P	P

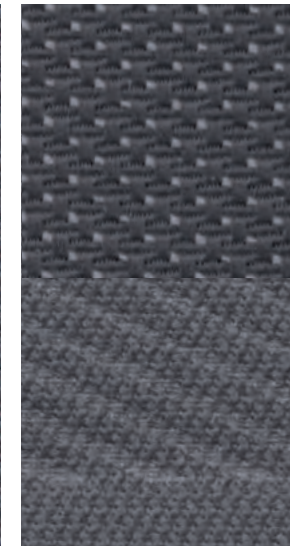
CHOOSE YOUR INTERIOR



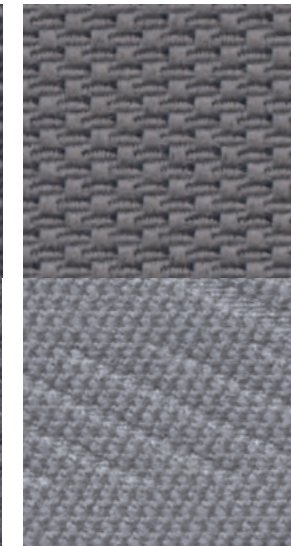
Nissan Frontier® King Cab® SV 4x4 shown in Premium Charcoal Cloth.



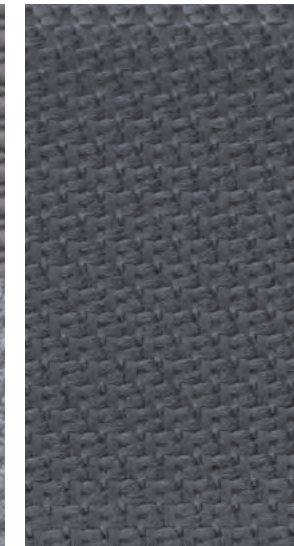
Charcoal Cloth
S



Premium Charcoal Cloth
SV



Sandstone Cloth
SV Crew Cab



Charcoal Cloth with Lava Red
Stitching
PRO-X™ | PRO-4X®



Charcoal Leather²¹
SV | PRO-X | PRO-4X

CHOOSE YOUR TRIM LEVEL

S KING CAB® CREW CAB

- 3.8-liter V6 Direct Injection Gasoline engine with 310 hp and 281 lb-ft of torque
- 9-speed automatic transmission
- 16" Styled steel wheels
- Intelligent Forward Collision Warning²²
- Automatic Emergency Braking with Pedestrian Detection⁹
- RearView Monitor²³
- Intelligent Driver Alertness²⁴
- Vehicle Dynamic Control (VDC)²⁵
- Active Brake Limited Slip (ABLS)
- Full-length, fully boxed ladder frame
- 7" Advanced Drive-Assist® Display²⁶
- NissanConnect® 8" color touch-screen display¹⁶
- Voice Recognition²⁷
- Apple CarPlay® integration¹⁶
- Android Auto™ compatibility¹⁶
- Hands-free Text Messaging Assistant²⁸
- Bluetooth® Hands-free Phone System¹⁶
- AM/FM audio system with six speakers
- Streaming Audio via Bluetooth®¹⁶
- One USB-A port and one USB-C port¹⁸
- SiriusXM® Radio with 3-month subscription included¹⁶
- Remote Keyless Entry with Push Button Ignition
- Power door locks
- Power windows with driver's one-touch auto-down
- Rear access doors
- Second-row under-seat storage¹⁹
- Tire Pressure Monitoring System (TPMS)²⁹

Crew Cab adds:

- Four full-size doors with seating for five
- 60/40-split flip-up rear bench seat
- Rear stabilizer bar
- Rear charge-only USB ports¹⁸

4x4 adds:

- Switch-operated 2-speed transfer case
- Hill descent control
- Steel front skid plate
- Front tow hooks



PRO-X™ CREW CAB

Includes SV equipment plus:

- 17" Dark-finished aluminum-alloy wheels
- Bilstein® off-road performance shock absorbers
- LED headlights
- LED fog lights
- LED Daytime Running Lights
- Lava Red painted tow hooks
- Upper body-color/lower black front bumper
- Black overfenders
- PRO-X bed side decal
- NissanConnect® 9" color touch-screen display¹⁶
- Nissan Door to Door Navigation with Premium Traffic²⁷
- NissanConnect® with Wi-Fi Hotspot¹⁶
- NissanConnect® Services powered by SiriusXM® with trial access to 5-year Select, 5-year Plus and 6-month Premium packages¹⁶
- SiriusXM® Travel Link with 3-month trial access¹⁶
- Nissan Intelligent Key® with Push Button Ignition
- Dual Zone Automatic Temperature Control
- PRO-X embroidered cloth seats
- Leather-wrapped steering wheel
- Leather-wrapped shift knob
- Lava Red contrast interior stitching and accents
- Overhead console with sunglasses storage
- Sun visors with illuminated vanity mirrors and extension
- LED front map lights and rear room lamp



SV KING CAB® CREW CAB CREW CAB LONG BED

SV includes S equipment plus:

- 17" 6-split spoke aluminum-alloy wheels
- Upper body-color/lower silver front bumper
- Body-color door handles
- Body-color rear bumper
- Sliding rear window
- Dual power outside mirrors
- 6-way power driver's seat, with 2-way manual lumbar support
- Chrome interior door handles
- Tow-Haul mode switch
- Vehicle security system

Crew Cab adds:

- Four full-size doors with seating for five
- 60/40-split flip-up rear bench seat
- Rear stabilizer bar
- Rear charge-only USB ports¹⁸

4x4 adds:

- Switch-operated 2-speed transfer case
- Hill descent control
- Steel front skid plate
- Front tow hooks



PRO-4X® CREW CAB

Includes PRO-X equipment plus:

- Switch-operated 2-speed transfer case
- Hill descent control
- Electronic locking rear differential
- Aluminum front skid plate
- Steel underbody skid plates (oil pan, fuel tank, 4x4 transfer case)
- PRO-4X bed side decal
- PRO-4X embroidered cloth seats
- PRO-4X carpeted floor mats



CHOOSE YOUR PACKAGE

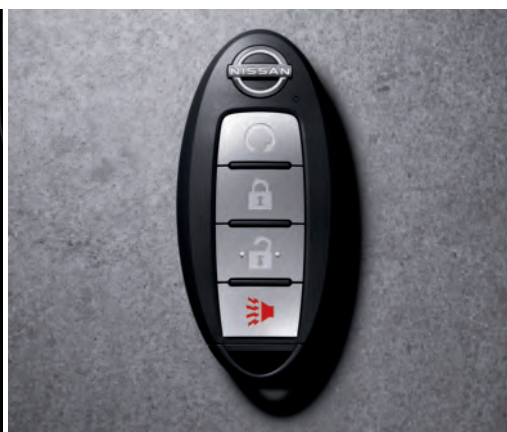


TECHNOLOGY PACKAGE | S SV PRO-X™ PRO-4X®

Available on King Cab®, Crew Cab, and Crew Cab Long Bed

- Lane Departure Warning¹³
- Blind Spot Warning¹²
- Rear Cross Traffic Alert¹¹

- Rear Automatic Braking¹⁰
- High Beam Assist
- Intelligent Cruise Control¹⁴
- Traffic Sign Recognition (PRO-X™ and PRO-4X® only)³⁰



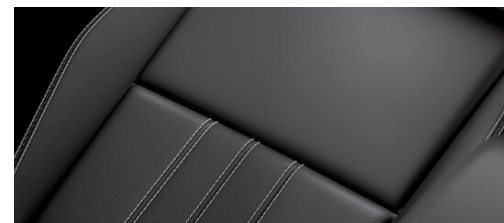
SV CONVENIENCE PACKAGE | SV

Available on King Cab® and Crew Cab

- Factory-applied spray-on bedliner
- Utili-track® Channel System with four adjustable tie-down cleats
- Bed-mounted 120-volt AC power outlet¹⁵
- 120-volt AC power outlet in rear center console¹⁵
- Heated outside mirrors
- Heated steering wheel
- Heated front seats
- LED under-rail bed lighting

- Remote Engine Start System with Intelligent Climate Control³
- Class IV tow hitch receiver with 4-pin/7-pin wiring harness³¹
- Fog lights
- Daytime Running Lights
- Dual Zone Automatic Temperature Control
- Nissan Intelligent Key® with Push Button Ignition
- Overhead console with sunglasses storage
- Leather-wrapped shift knob

*SV Convenience Package is not available on Crew Cab Long Bed.



SV PREMIUM PACKAGE | SV

Available on Crew Cab

- Fender® premium audio with 10 speakers, including subwoofers
- Leather-appointed seats
- Auto-dimming rearview mirror
- HomeLink® Universal Transceiver

- LED front map lights and rear room lamp
- LED signature headlights
- LED fog lights
- Power sliding glass moonroof with tilt feature



PRO CONVENIENCE PACKAGE | PRO-X™ PRO-4X®

Available on Crew Cab

- Factory-applied spray-on bedliner
- Utili-track® Channel System with four adjustable tie-down cleats
- Bed-mounted 120-volt AC power outlet¹⁵
- 120-volt AC power outlet in rear center console¹⁵
- Heated outside mirrors
- Heated steering wheel

- Heated front seats
- LED under-rail bed lighting
- Remote Engine Start System with Intelligent Climate Control³
- Class IV tow hitch receiver with 4-pin/7-pin wiring harness³¹
- Intelligent Around View® Monitor (PRO-X)⁴
- Intelligent Around View® Monitor with Off-Road Mode (PRO-4X)⁴
- Wireless charger¹⁸



PRO PREMIUM PACKAGE | PRO-X™ PRO-4X®

Available on Crew Cab

- 17" Beadlock-style aluminum-alloy wheels
- Fender® premium audio system with 10 speakers, including subwoofers
- Leather-appointed seats

- Auto-dimming rearview mirror
- HomeLink® Universal Transceiver
- Premium door trim and center console stitching
- Power sliding glass moonroof with tilt feature

CHOOSE YOUR ACCESSORIES



- A. Nissan Tailgate Audio by KICKER®**
Tailgate with your favorite soundtrack.
- B. Illuminated Kick Plates**
Illumination and style that greets you on entry.
- C. Hood Graphic**
Add more stylish flare to your hood.
- D. Sliding Bed Extender¹⁹**
Give your bed more capacity, with Utili-track® adjustability.
- E. Weight-Distributing Hitch Ball Mount³¹**
Tow heavier loads with more confidence and control.
- F. All-Season Floor Mats - High Wall Liner**
Don't let the muck mess up your truck.
- G. Bedliner**
Armor the inside of your bed for the long haul.
- H. PRO-4X® Mud Flaps**
Protect your Frontier from mud, rocks, and debris kicked up by the tires.

Additional Accessories:

- Splash Guards
- Carpeted Floor Mats
- PRO-4X Illuminated Kick Plates
- Door Scuff Protectors
- Clear Door Edge Protectors
- Clear Hood Protector
- Under-seat Storage Tray Nets¹⁹
- Step Rails
- Tow Hitch Receiver, Class IV³¹
- Affiliated Yakima® FullTilt 4 Bike Rack^{19, 33}
- Affiliated Yakima® HoldUp Bike Rack^{19, 33}
- And More

For more information and to shop online for Frontier® Genuine Nissan Accessories, go to bit.ly/22Frontier-Accys

NISSAN FRONTIER® ACCESSORIES

Ramp it up

Every Genuine Nissan Accessory is custom-fit, custom-designed, and durability-tested. Each one is backed by Nissan's 3-year/36,000-mile (whichever occurs first) limited warranty (if installed by dealer at the time of purchase), and can be financed when installed by dealer at time of purchase.³² Affiliated Yakima® accessories are not warranted by Nissan. Refer to product manufacturer for warranty details. Nissan Limited Warranty does not cover damages or failures to the vehicle caused by improper installation or alterations of any Nissan approved accessory or component. Contact your dealer/retailer for details.



Rear/Left: **Nissan Frontier® Crew Cab® PRO-4X®** shown in Boulder Gray Pearl with 17" Beadlock-style Aluminum-alloy wheels (standard on PRO-4X with Premium Package), Hood Wind Deflector, Side-Window Deflectors, Off-Road Style Step Rails, PRO-4X Mud Flaps, and Yakima® OverHaul HD System.¹⁹

Front/Right: **Nissan Frontier King Cab® SV 4x4** shown in Cardinal Red TriCoat with 17" Aluminum-alloy wheels, Sport Bar, Bed Side Graphics, Side-Window Deflectors, Black Step Rails, Splash Guards, Tailgate Logo Insert, Bed Assist Grip, Bed Cargo Net,¹⁹ Rear Bumper Step, Class IV Tow Hitch Receiver, Hitch Ball Mount, Hitch Ball, and Trailer Tow Harness (4-pin/7-pin).³¹

SPECIFICATIONS

Engine	King Cab®		Crew Cab			
	S	SV	S	SV	PRO-X™	PRO-4X®
3.8-liter Direct Injection Gasoline (DIG) DOHC 24-valve V6 engine Horsepower – 310 hp @ 6,400 rpm Torque – 281 lb-ft of torque @ 4,400 rpm	■	■	■	■	■	■

Drivetrain						
9-speed automatic transmission	■	■	■	■	■	■
Switch-operated 2-speed transfer case 4x4 ³⁴	□	□	□	□		■
Electronic locking rear differential						■
Tow-Haul mode switch		■	■	■	■	■

Brakes						
Front and rear vented disc brakes	■	■	■	■	■	■
4-wheel Anti-lock Braking System (ABS)	■	■	■	■	■	■
Electronic Brake force Distribution (EBD)	■	■	■	■	■	■
Brake Assist ³⁵	■	■	■	■	■	■

Suspension/Steering						
Independent double-wishbone front suspension with stabilizer bar	■	■	■	■	■	■
Overslung multi-leaf rear suspension with solid axle	■	■	■	■	■	■
Rear stabilizer bar			■	■	■	■
Bilstein® off-road performance shock absorbers				■	■	

Driver Assistance Technologies						
Cruise control	■	■	■	■	■	■
Intelligent Cruise Control ¹⁴	T	T	T	T	T	T
Intelligent Forward Collision Warning ²²	■	■	■	■	■	■
Automatic Emergency Braking with Pedestrian Detection ⁹	■	■	■	■	■	■
Lane Departure Warning ¹³	T	T	T	T	T	T
Blind Spot Warning ¹²	T	T	T	T	T	T
Rear Cross Traffic Alert ¹¹	T	T	T	T	T	T
RearView Monitor ²³	■	■	■	■	■	■
Intelligent Around View® Monitor ⁴					C2	
Intelligent Around View® Monitor with Off-Road Mode ⁴						C2
Rear Sonar System ³⁶	T	T	T	T	T	T
Rear Automatic Braking ¹⁰	T	T	T	T	T	T
High Beam Assist	T	T	T	T	T	T
Hill start assist ³⁷	■	■	■	■	■	■
Hill descent control ³⁷	□	□	□	□		■
Vehicle Dynamic Control (VDC) with Traction Control System (TCS) ²⁵	■	■	■	■	■	■
Active Brake Limited Slip (ABLS)	■	■	■	■	■	■
Trailer Sway Control ³¹	■	■	■	■	■	■
Intelligent Driver Alertness ²⁴	■	■	■	■	■	■
Traffic Sign Recognition ³⁰					T	T

Wheels/Tires						
16" Styled steel wheels	■		■			
17" 6-split spoke aluminum-alloy wheels		■		■		
17" Dark finished aluminum-alloy wheels				■	■	
17" Beadlock-style aluminum-alloy wheels					P2	P2
265/70R16 all-season tires	■		■			
265/65R17 all-season tires		■		■		

■ Standard □ Optional T Technology Package C1 SV Convenience Package C2 PRO Convenience Package P1 SV Premium Package P2 PRO Premium Package LB Crew Cab Long Bed

Wheels/Tires (continued)	King Cab®		Crew Cab			
	S	SV	S	SV	PRO-X™	PRO-4X®
265/70R17 all-terrain tires					■	■

Chassis						
Body-on-frame construction	■	■	■	■	■	■
Full-length, fully boxed ladder frame	■	■	■	■	■	■

Exterior Features						
Front skid plate	■	■	■	■	■	■
Skid plates – oil pan, fuel tank, 4x4 transfer case						■
Intelligent Auto Headlights	■	■	■	■	■	■
Daytime Running Lights and fog lights		C1		C1/LB		
LED signature headlights, LED Daytime Running Lights, and LED fog lights				P1	■	■
LED taillights	■	■	■	■	■	■
Front tow hooks ³⁷	□	□	□	□	■	■
Upper body-color/lower black front bumper	■		■		■	■
Upper body-color/lower silver front bumper		■		■		
Body-color rear bumper		■		■		
Black overfenders					■	■
Black door handles and outside mirrors	■		■			
Body-color door handles and outside mirrors		■		■	■	■
Dual power outside mirrors		■		■	■	■
Heated outside mirrors		C1		C1	C2	C2
Rear access doors	■	■				
Four full-size doors			■	■	■	■
Power sliding glass moonroof with tilt feature				P1	P2	P2
Sliding rear window		■		■	■	■
Rear privacy glass	■	■	■	■	■	■
Class IV tow hitch receiver with wiring harness ³¹		C1		C1/LB	C2	C2
Long Bed					□	
Utili-track® Channel System with four adjustable tie-down cleats ¹⁹		C1		C1	C2	C2
Factory-applied spray-on bedliner		C1		C1/LB	C2	C2
Bed-mounted 120-volt AC power outlet ¹⁵		C1		C1/LB	C2	C2
Dampened assist tailgate	■	■	■	■	■	■
Overhead cargo bed lights	■	■	■	■	■	■
Bed rail caps and tailgate spoiler	■	■	■	■	■	■
LED under-rail bed lighting		C1		C1/LB	C2	C2

Comfort/Convenience						
Air conditioning	■	■	■	■		
Dual Zone Automatic Temperature Control		C1		C1/LB	■	■
In-cabin microfilter	■	■	■	■	■	■
Rear Door Alert ³⁸	■	■	■	■	■	■
Power door locks	■	■	■	■	■	■
Power windows with driver's one-touch auto-down	■	■	■	■	■	■
Remote Keyless Entry with Push Button Ignition	■	■	■	■		
Nissan Intelligent Key® with Push Button Ignition		C1		C1/LB	■	■
Remote Engine Start System with Intelligent Climate Control ³		C1		C1/LB	C2	C2
Variable intermittent windshield wipers	■	■	■	■	■	■
Auto-dimming rearview mirror with Homelink® Universal Transceiver				P1	P2	P2
Front map lights and rear room lamp	■	■	■	■	■	■
LED front map lights and rear room lamp		P1		P1	■	■

Comfort/Convenience (continued)	King Cab®		Crew Cab			
	S	SV	S	SV	PRO-X™	PRO-4X®
Two 12-volt DC power outlets ¹⁸	■	■	■	■	■	■
120-volt AC power outlet in rear center console ¹⁵		C1		C1/LB	C2	C2
Sun visors with vanity mirrors and extension	■	■	■	■		
Sun visors with illuminated vanity mirrors and extension					■	■
Tilt steering column	■	■	■	■	■	■
Second-row under-seat storage ¹⁹					■	■
Overhead console with sunglasses storage		C1		C1	■	■

Seating/Appointments						
6-way manually adjustable driver's seat	■		■			
6-way power adjustable driver's seat, with 2-way manual lumbar support		■		■	■	■
4-way manually adjustable passenger's seat	■	■	■	■	■	■
Forward-facing rear flip-up seats	■	■				
60/40-split flip-up rear bench seat			■	■	■	■
Cloth seat trim	■	■	■	■		
PRO embroidered cloth seats					■	■
Leather-appointed seats				P1	P2	P2
Heated front seats		C1		C1	C2	C2
Leather-wrapped steering wheel		C1		C1/LB	■	■
Heated steering wheel		C1		C1	C2	C2
Leather-wrapped shift knob		C1		C1	■	■
Lava Red interior accents					■	■
Premium door trim and center console stitching					P2	P2
PRO-4X® carpeted floor mats						■

Infotainment						
7" Advanced Drive-Assist® Display ²⁶	■	■	■	■	■	■
NissanConnect® 8" color touch-screen display ¹⁶	■	■	■	■		
NissanConnect® 9" color touch-screen display ¹⁶					■	■
Nissan Door to Door Navigation with Premium Traffic ²⁷					■	■
NissanConnect® Services powered by SiriusXM® with trial access to 5-year Select, 5-year Plus and 6-month Premium Package ¹⁶					■	■
Apple CarPlay® integration ¹⁶	■	■	■	■	■	■
Android Auto™ compatibility ¹⁶	■	■	■	■	■	■
NissanConnect® with Wi-Fi Hotspot ¹⁶					■	■
SiriusXM® Traffic and Travel Link with 3-month trial access ¹⁶					■	■
Hands-free Text Messaging Assistant ²⁸	■	■	■	■	■	■
Bluetooth® Hands-free Phone System ¹⁶	■	■	■	■	■	■
AM/FM audio system with six speakers	■	■	■	■	■	■
Fender® premium audio system with ten speakers, including subwoofers					P1	P2
One USB-A port and one USB-C port ¹⁸	■	■				
Two USB-A ports and two USB-C ports ¹⁸			■	■	■	■
Wireless charger ¹⁸					C2	C2
SiriusXM® Radio with 3-month subscription included ¹⁶	■	■	■	■	■	■
Streaming Audio via Bluetooth® ¹⁶	■	■	■	■	■	■

Safety						
Nissan Advanced Air Bag System with dual-stage supplemental front air bags with seat-belt and occupant-classification sensors ³⁹	■	■	■	■	■	■
Driver and front-passenger seat-mounted side-impact supplemental air bags ³⁹	■	■	■	■	■	■

Safety (continued)	King Cab®		Crew Cab			
	S	SV	S	SV	PRO-X™	PRO-4X®
Roof-mounted curtain supplemental air bags for side-impact with rollover sensor ³⁹	■	■	■	■	■	■
Driver and front-passenger supplemental knee air bags ³⁹	■	■	■	■	■	■
LATCH System (Lower Anchors and Tethers for Children)	■	■	■	■	■	■
Zone Body construction with front and rear crumple zones	■	■	■	■	■	■
Tire Pressure Monitoring System (TPMS) ²⁹	■	■	■	■	■	■

CAPACITIES/TOWING/PAYLOAD/MPG

Capacities	King Cab	Crew Cab
Seating capacity	4	5
Interior passenger volume (cu. ft.)	85.6	100.1 ⁴⁰
Fuel tank (gals.)	21	21

Maximum Towing – Lbs. ⁵				
	S	SV	PRO-X	PRO-4X
King Cab 4x2	6,720	6,670	-	-
King Cab 4x4	6,510	6,470	-	-
Crew Cab 4x2	6,570	6,530	6,470	-
Crew Cab 4x4	6,370	6,330	-	6,270
Crew Cab Long Bed 4x2	-	6,460	-	-
Crew Cab Long Bed 4x4	-	6,260	-	-

Maximum Payload – Lbs. ⁶				
	S	SV	PRO-X	PRO-4X
King Cab 4x2	1,600	1,610	-	-
King Cab 4x4	1,410	1,440	-	-
Crew Cab 4x2	1,460	1,480	1,430	-
Crew Cab 4x4	1,260	1,290	-	1,230
Crew Cab Long Bed 4x2	-	1,360	-	-
Crew Cab Long Bed 4x4	-	1,160	-	-

2022 EPA Fuel Economy Estimates ⁴¹	
City/Hwy/Combined MPG	
4x2 (4x4)	18/24/20 (17/22/19)

NISSAN ROADSIDE ASSISTANCE

Your peace of mind is on us. For 36 months or 36,000 miles, whichever comes first, your new Nissan is covered for the following:⁴²

- Flat-tire changes
- Trip Interruption benefits
- Jump starts
- Vehicle lockouts
- Emergency fuel delivery

Follow Nissan on:



visit [NissanUSA.com/frontier](https://www.nissanusa.com/frontier)

PRINTED IN USA



Sign up to get the latest on
Nissan vehicles, news, and events.

<https://www.nissanusa.com/brochures/request-brochure.html>